

**TTP-244 Pro Series**

**THERMAL TRANSFER / DIRECT THERMAL  
BAR CODE PRINTER**

**USER'S  
MANUAL**

## **Copyright Information**

©2014 TSC Auto ID Technology Co., Ltd.

The copyright in this manual, the software and firmware in the printer described therein are owned by TSC Auto ID Technology Co., Ltd., All rights reserved.

CG Triumvirate is a trademark of Agfa Corporation. CG Triumvirate Bold Condensed font is under license from the Monotype Corporation. Windows is a registered trademark of Microsoft Corporation.

All other trademarks are the property of their respective owners.

Information in this document is subject to change without notice and does not represent a commitment on the part of TSC Auto ID Technology Co. No part of this manual may be reproduced or transmitted in any form or by any means, for any purpose other than the purchaser's personal use, without the expressed written permission of TSC Auto ID Technology Co.

## Agency Compliance and Approvals



EN 55032, Class A

EN 55024

EN 60950-1; EN 61000-3-2; EN 61000-3-3

This is a class A product. In a domestic environment this product may cause radio interference in which case the user may be required to take adequate measures.



FCC part 15B, Class A

ICES-003, Class A

This equipment has been tested and found to comply with the limits for a Class A digital device, pursuant to Part 15 of the FCC Rules. These limits are designed to provide reasonable protection against harmful interference when the equipment is operated in a commercial environment.

This equipment generates, uses, and can radiate radio frequency energy and, if not installed and used in accordance with the manufacturer's instruction manual, may cause harmful interference with radio communications. Operation of this equipment in a residential area is likely to cause harmful interference, in which case you will be required to correct the interference at your own expense.

This Class A digital apparatus complies with Canadian ICES-003.

Cet appareil numérique de la classe A est conforme à la norme NMB-003 du Canada.

This device complies with Part 15 of the FCC Rules. Operation is subject to the following two conditions: (1) This device may cause harmful interference, and (2) this device must accept any interference received, including interference that may cause undesired operation.



AS/NZS CISPR 32, Class A



KN 22

KN 24

이 기기는 업무용(A 급) 전자파적합기기로서 판매자 또는 사용자는 이 점을 주의하시기 바라며, 가정외의 지역에서 사용하는 것을 목적으로 합니다.



GB 4943.1

GB 9254, Class A

GB 17625.1

---

此为 A 级产品，在生活环境中，该产品可能会造成无线电干扰，  
在这种情况下，可能需要用户对干扰采取切实可行的措施。

---



EN 60950-1



IS 13252(Part 1)/

IEC 60950-1



TP TC 004/2011

TP TC 020/2011

---

Note: There may have certification differences in the series models, please refer to product label for accuracy.

**Important safety instructions:**

1. Read all of these instructions and keep them for later use.
2. Follow all warnings and instructions on the product.
3. Disconnect the power plug from the AC outlet before cleaning or if fault happened.

Do not use liquid or aerosol cleaners. Using a damp cloth is suitable for cleaning.

4. The mains socket shall be installed near the equipment and easily accessible.
5. The unit must be protected against moisture.
6. Ensure the stability when installing the device, Tipping or dropping could cause damage.
7. Make sure to follow the correct power rating and power type indicated on marking label

provided by manufacture.

8. Please refer to user manual for maximum operation ambient temperature.

**WARNING:**

Hazardous moving parts, keep fingers and other body parts away.

**CAUTION:**

(For equipment with RTC (CR2032) battery or rechargeable battery pack)

Risk of explosion if battery is replaced by an incorrect type.

Dispose of used batteries according to the Instructions as below.

1. DO NOT throw the battery in fire.
2. DO NOT short circuit the contacts.
3. DO NOT disassemble the battery.
4. DO NOT throw the battery in municipal waste.

5. The symbol of the crossed out wheeled bin indicates that the battery should not be placed in municipal waste.



**Caution:** The printhead may be hot and could cause severe burns. Allow the printhead to cool.

**CAUTION:**

Any changes or modifications not expressly approved by the grantee of this device could void the user's authority to operate the equipment.

# Contents

1. Introduction .....	1
1.1 Product Introduction .....	1
1.2 Product Features .....	2
<b>1.2.1 Printer Standard Features</b> .....	2
<b>1.2.2 Printer Optional Features</b> .....	3
1.3 General Specifications .....	4
1.4 Print Specifications .....	4
1.5 Ribbon Specifications .....	4
1.6 Media Specifications .....	6
1.7 Various Sensor .....	7
2. Operations Overview .....	9
2.1 Unpacking and Inspection .....	9
2.2 Printer Overview .....	10
<b>2.2.1 Front View</b> .....	10
<b>2.2.2 Interior View</b> .....	11
<b>2.2.3 Rear View</b> .....	12
2.3 LED Indicators and Buttons .....	13
<b>2.3.1 LED Indication</b> .....	13
<b>2.3.2 Buttons</b> .....	13
3. Setup .....	14
3.1 Setting up the Printer .....	14
3.2 Loading the Media .....	15
3.3 Loading the Ribbon .....	17
3.4 Install SD Memory Card (Option) .....	20
4. Using Printer .....	22
4.1 Power-on Utilities .....	22
<b>4.1.1 Self Test and Dump Mode</b> .....	22
<b>4.1.2 Gap Sensor Calibration Utility</b> .....	24
<b>4.1.3 Printer Initialization</b> .....	25
5. Diagnostic Tool .....	27

5.1 Start the Diagnostic Tool .....	27
5.2 Printer Function .....	28
6. Troubleshooting .....	29
7. Maintenance .....	30
Revise History .....	31

# 1. Introduction

---

## 1.1 Product Introduction

Thank you very much for purchasing TSC bar code printer.

The TTP-244 Pro offers the largest media and ribbon capacities in its class. Unlike most printers, it can easily handle both a 300-meter ribbon and a full 8-inch OD roll of labels. With its fast 5 inch per second print speed, along with the largest memory capacity in its class, the TTP-244 Pro easily outperforms the competition.

With its small, compact footprint and dual-motor design, the TTP-244 Pro is perfect for a wide variety of label and tag printing applications – everything from shipping labels to compliance and general purpose product-identification labels & tags.

The TTP-244 Pro supports PDF417, QRCode, Datamatrix .... two-dimensional barcodes used to print complex transportation formats – a feature that makes it ideal for automobile service shops, stock rooms, and walk-in shipping and mail centers.

To print label formats, please refer to the instructions provided with your labeling software; if you need to write the custom programs, please refer to the TSPL/TSPL2 programming manual that can be found on the accessories CD-ROM or on TSC website at

<http://www.tscprinters.com>.

- Applications
  - Shipping and receiving
  - Compliance labeling
  - Asset tracking
  - Inventory control
  - Document management
  - Shelf labeling and product marking
  - Specimen labeling and patient tracking



## 1.2 Product Features

### 1.2.1 Printer Standard Features

The printer offers the following standard features.

Product standard feature		
Thermal transfer or direct thermal printing		
Black mark reflective sensor		
Gap transmissive sensor		
Ribbon end sensor		
2 buttons		
3 LED for printer status (Power, Error, On-line)		
32-bit RISC CPU		
USB 2.0 (full speed) & RS-232 interface		
8 MB SDRAM memory		
4 MB FLASH memory		
Eltron® EPL and Zebra® ZPL emulation languages support		
Internal 8 alpha-numeric bitmap fonts		
Internal Monotype Imaging® true type font engine with one CG Triumvirate Bold Condensed scalable font		
Fonts and bar codes can be printed in any one of the four directions (0, 90,180, 270 degree)		
Downloadable fonts from PC to printer memory		
Downloadable firmware upgrades		
Bar code, graphics/image printing		
<b>Supported bar code</b>		<b>Supported image</b>
<b>1D bar code</b>	<b>2D bar code</b>	BITMAP, BMP, PCX (Max. 256 colors graphics)
Code 39, Code 93, Code 128UCC, Code 128 subset A, B, C, Codabar, Interleave 2 of 5, EAN-8, EAN-13, EAN-128, UPC-A, UPC-E, EAN and UPC 2 (5) digits add-on, MSI, PLESSEY, POSTNET, RSS-Stacked, GS1 DataBar, Code 11	DataMatrix, Maxicode, PDF-417, Aztec, QR code	

## Code page

- Codepage 437 (English - US)
- Codepage 737 (Greek)
- Codepage 850 (Latin-1)
- Codepage 852 (Latin-2)
- Codepage 855 (Cyrillic)
- Codepage 857 (Turkish)
- Codepage 860 (Portuguese)
- Codepage 861 (Icelandic)
- Codepage 862 (Hebrew)
- Codepage 863 (French Canadian)
- Codepage 864 (Arabic)
- Codepage 865 (Nordic)
- Codepage 866 (Russian)
- Codepage 869 (Greek 2)
- Codepage 950 (Traditional Chinese)
- Codepage 936 (Simplified Chinese)
- Codepage 932 (Japanese)
- Codepage 949 (Korean)
- Codepage 1250 (Latin-2)
- Codepage 1251 (Cyrillic)
- Codepage 1252 (Latin-1)
- Codepage 1253 (Greek)
- Codepage 1254 (Turkish)
- Codepage 1255 (Hebrew)
- Codepage 1256 (Arabic)
- Codepage 1257 (Baltic)
- Codepage 1258 (Vietnam)
- ISO-8859-1: Latin-1 (Western European)
- ISO-8859-2: Latin-2 (Central European)
- ISO-8859-3: Latin-3 (South European)
- ISO-8859-4: Latin-4 (North European)
- ISO-8859-5: Cyrillic
- ISO-8859-6: Arabic
- ISO-8859-7: Greek
- ISO-8859-8: Hebrew
- ISO-8859-9: Turkish
- ISO-8859-10: Nordic
- ISO-8859-15: Latin-9
- UTF-8

### 1.2.2 Printer Optional Features

The printer offers the following optional features.

Product option feature	User option	Factory option
Centronics parallel & RS-232 serial interfaces or Centronics parallel & USB serial interfaces		<input type="radio"/>
Bluetooth module (serial interface)	<input type="radio"/>	
802.11 b/g/n wireless module (serial interface)	<input type="radio"/>	
External roll mount, media OD. 214 mm (8.4") on a 1" or 3" core	<input type="radio"/>	

SD card reader for memory expansion up to 4G	○	
3" core label spindle	○	
KP-200 Plus keyboard	○	
KU-007 Plus programmable smart keyboard	○	

### 1.3 General Specifications

General Specifications	
Physical dimensions	232 mm (W) x 156 mm (H) x 288 mm (D)
Enclosure	ABS plastic
Weight	2.5 kg (5.51 lbs)
Power	External universal switching power supply Input: AC 100-240V, 2.5A, 50-60Hz Output: DC 24V, 2.5A, 60W
Environmental condition	Operation: 5 ~ 40°C, 25 ~ 85% non-condensing Storage: -40 ~ 60°C, 10~ 90% non-condensing
Environmental concern	Comply with RoHS, WEEE

### 1.4 Print Specifications

Print Specifications	
Print head resolution (dots per inch/mm)	203 dots/inch (8 dots/mm)
Printing method	Thermal transfer or direct thermal
Dot size (width x length)	0.125 x 0.125 mm (1 mm = 8 dots)
Max. print speed	5 ips (127 mm/sec)
Max. print width	4.25" (108 mm)
Max. print length	90" (2286 mm)

### 1.5 Ribbon Specifications

Ribbon Specifications	
Ribbon outside diameter	Max. 67 mm OD

Ribbon length	300 m
Ribbon core inside diameter	1" core
Ribbon width	40 mm ~ 110 mm (1.6" ~ 4.3")
Ribbon wound type	Ink coated outside

*Note: The maximum length of ribbon depends on its thickness and core outside diameter.*

The formula below defines the correlation between ribbon roll length and ribbon core diameter.

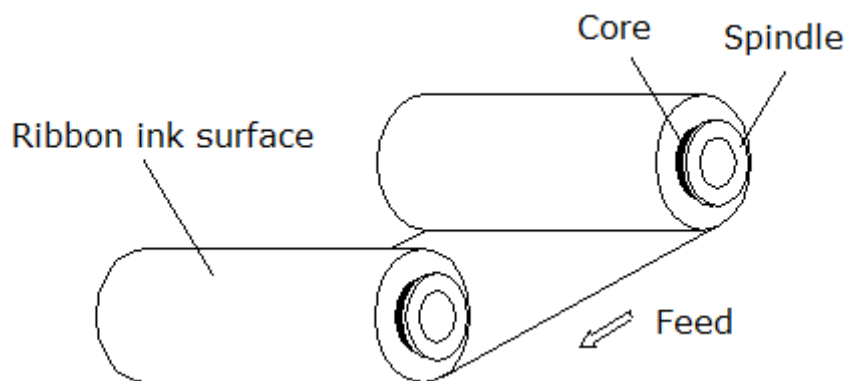
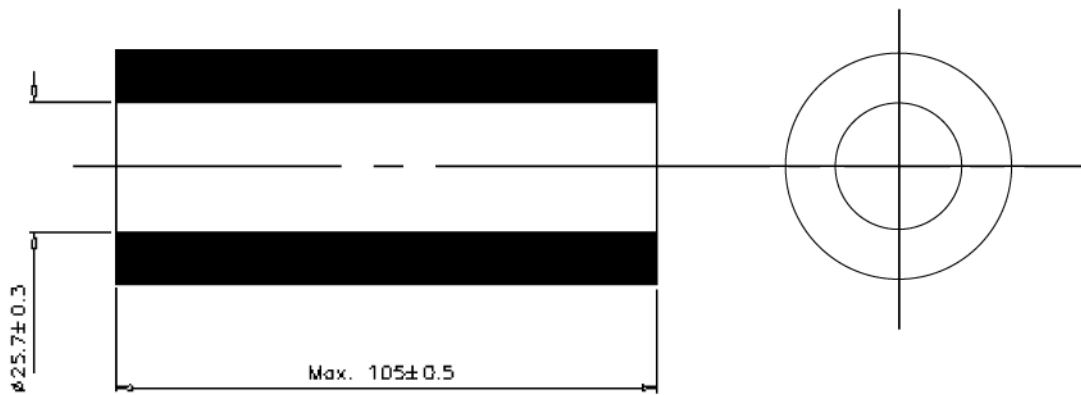
$$L = \frac{(D^2 - d^2) \times \pi}{4t}, \text{ where}$$

L = Ribbon length

D = Max. roll diameter

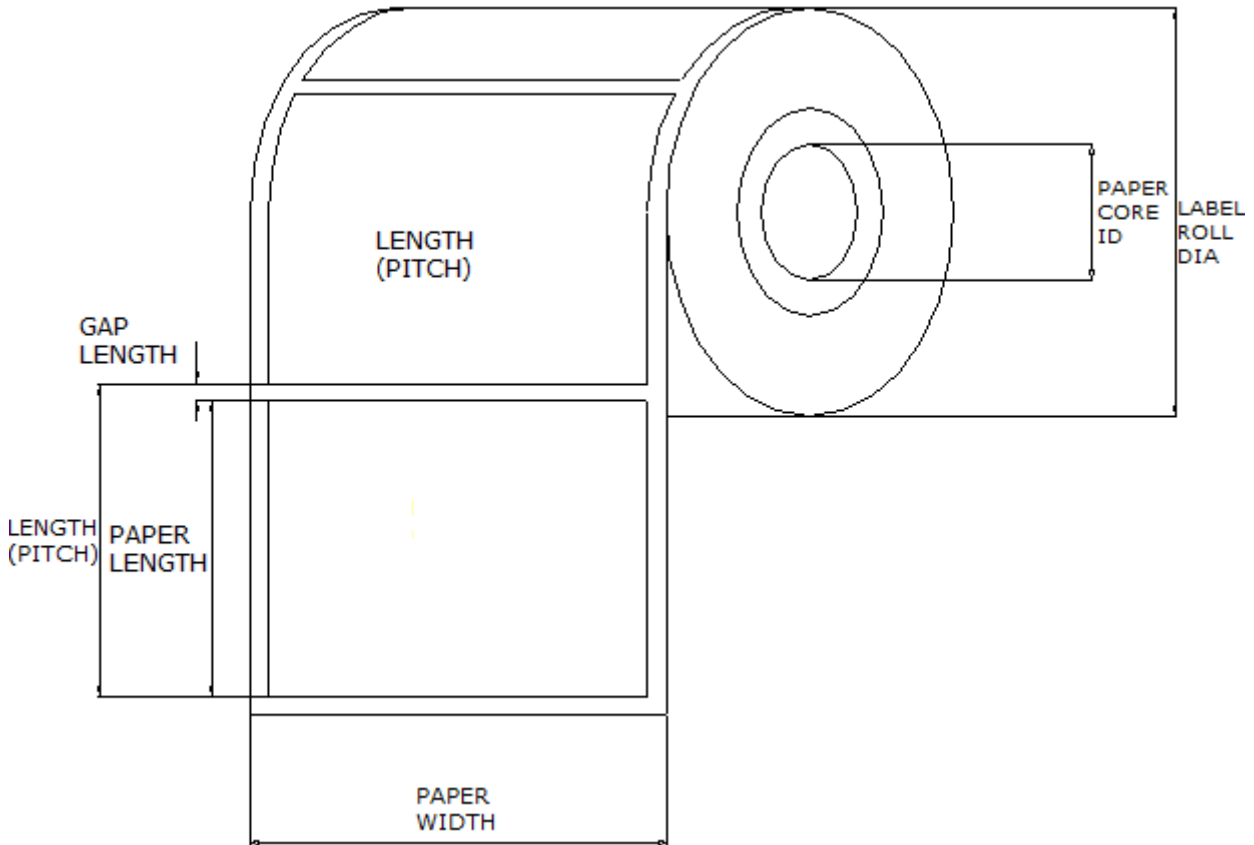
d = Ribbon core outside diameter

t = Ribbon thickness



## 1.6 Media Specifications

Media Specifications	
Label roll capacity	110 mm (4.33") OD
Media core diameter	25.4 ~ 76.2 mm (1" ~ 3")
Media type	Continuous, die-cut, black mark, External fan-fold, notched
Media wound type	Outside wound
Media width	25.4 ~ 112 mm (1.0" ~ 4.4")
Media thickness	0.06 ~ 0.19 mm (2.36 ~ 7.48 mil)
Label length	10 ~ 2,286 mm (0.39" ~ 90")

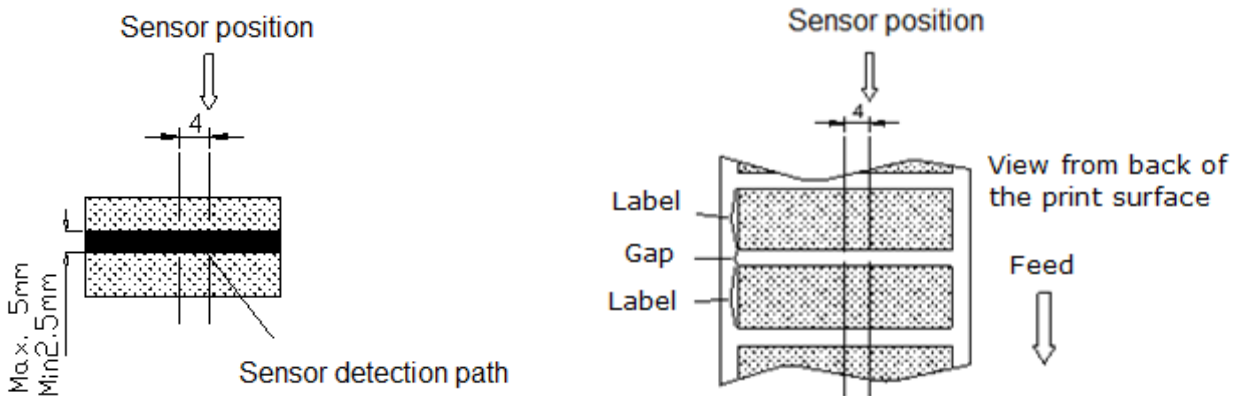


## 1.7 Various Sensor

### Gap Sensor

The gap sensor detects a label gap to locate the top of form of the next label. The sensor is mounted 4 mm off the center line of the main mechanism.

#### In case of Label

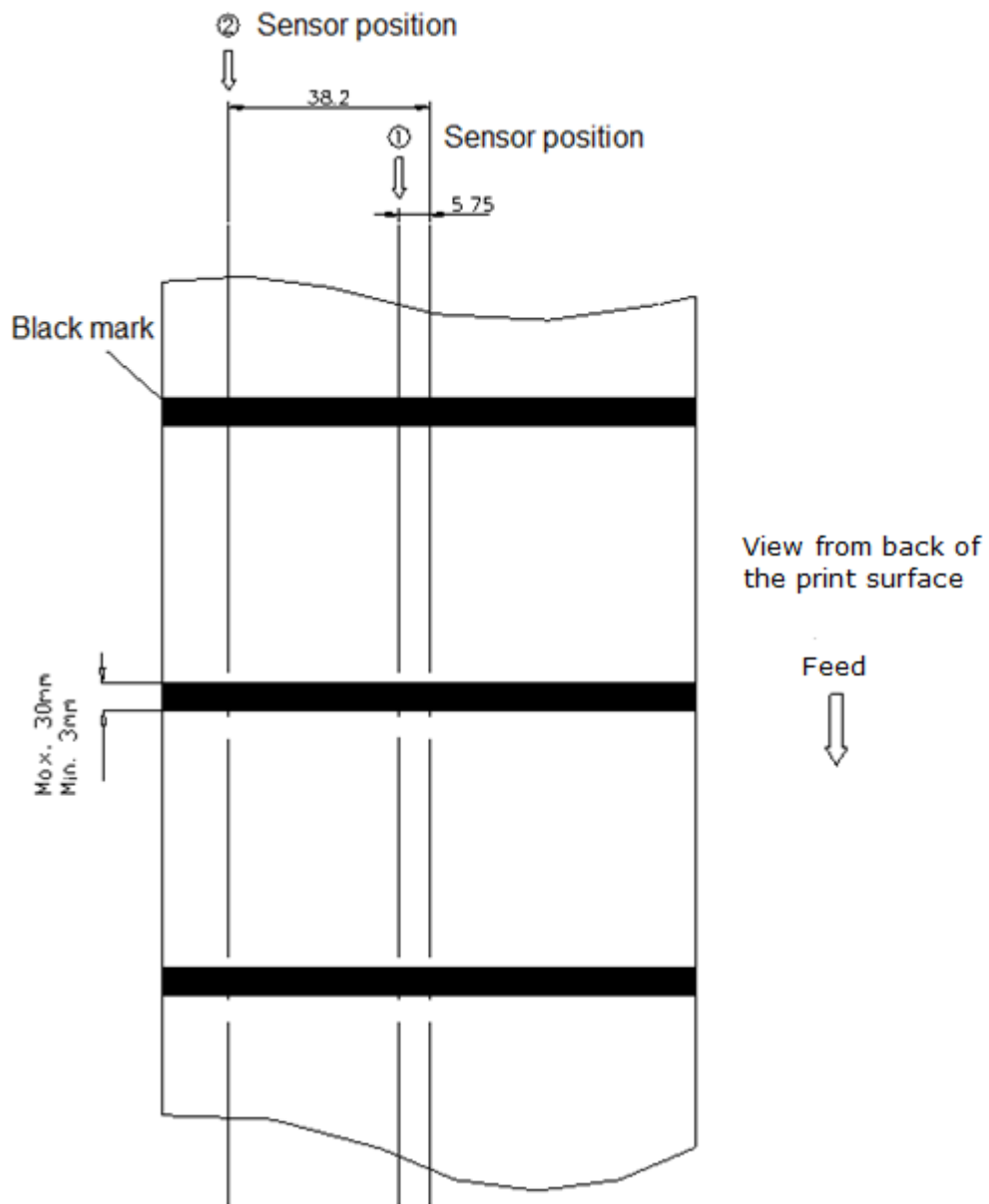


### Black Mark Sensor

The black mark sensor locates the position of label by emitting infrared rays onto the black mark at the back of the ticket. The sensor is mounted 5.75 mm off the center line of the mechanism.

#### In case of Ticket

The default sensor position is (1) as shown on the figure below. To change to the (2) position, the customer should notify the manufacturer in advance. There can be only one position for the sensor.



## Ribbon End Sensor

The sensor detects the end portion of the ribbon. The ribbon end must be transparent.

## 2. Operations Overview

---

### 2.1 Unpacking and Inspection

This printer has been specially packaged to withstand damage during shipping. Please carefully inspect the packaging and printer upon receiving the bar code printer. Please retain the packaging materials in case you need to reship the printer.

Unpacking the printer, the following items are included in the carton.

- One printer unit
- One Windows labeling software/Windows driver CD disk
- One quick installation guide
- One external auto switching power supply
- One power cord
- One label spindle
- Two fixing tabs
- Two ribbon spindles
- One paper core for ribbon rewind spindle

If any parts are missing, please contact the Customer Service Department of your purchased reseller or distributor.



## 2.2 Printer Overview

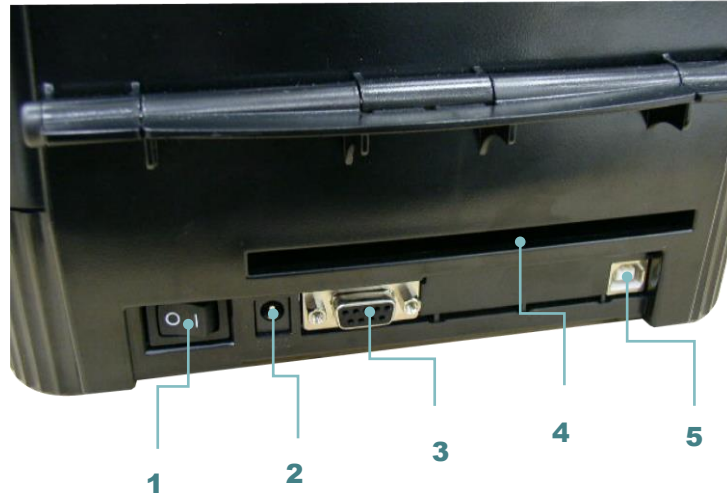
### 2.2.1 Front View



## 2.2.2 Interior View



### 2.2.3 Rear View



- 1.** Power on/off switch
- 2.** Power supply DC jacket
- 3.** RS-232C interface
- 4.** Label insert opening (For use with external media)
- 5.** USB interface
- 6.** Centronics interface (Factory option)

**Note:**

The interface picture here is for reference only. Please refer to the product specification for the interfaces availability.

## 2.3 LED Indicators and Buttons

### 2.3.1 LED Indication

LEDs	Indication
<b>PWR. (POWER) Indicator</b>	The green <b>PWR.</b> indicator illuminates when the <b>POWER</b> switch is turned on.
<b>ON-LINE Indicator</b>	The green <b>ON-LINE</b> indicator illuminates when the printer is ready to print. When <b>PAUSE</b> button is pressed, the <b>ON-LINE</b> indicator flashes.
<b>ERR. Indicator (Error/Paper Empty)</b>	The red <b>ERR.</b> indicator illuminates in the event of a printer error, such as memory error, syntax error, and so forth. For a full list of error messages, please refer to section 6, Troubleshooting Guides.

### 2.3.2 Buttons

Buttons	Function
<b>PAUSE Button</b>	<p>The PAUSE button allows the user to stop a print job and then continue the printing with a second depression of the button. By pressing the PAUSE button: (1) the printer stops printing after the printing label, (2) the PAUSE LED flashes, and (3) the printer will hold all data in memory. This allows for trouble-free replacement of label stock and thermal transfer ribbon. A second depression of the PAUSE button will restart the printer.</p> <p><b>Note: If the PAUSE button is held down for more than 3 seconds, the printer will be reset and all data of the previous printing job will be lost.</b></p>
<b>FEED Button</b>	Press the FEED button to feed the label to the top of form of the next label.

## 3. Setup

---

### 3.1 Setting up the Printer



1. Place the printer on a flat, secure surface.
2. Make sure the **POWER** switch is off.
3. Connect the printer to the computer mainframe with the RS-232C or USB cable.



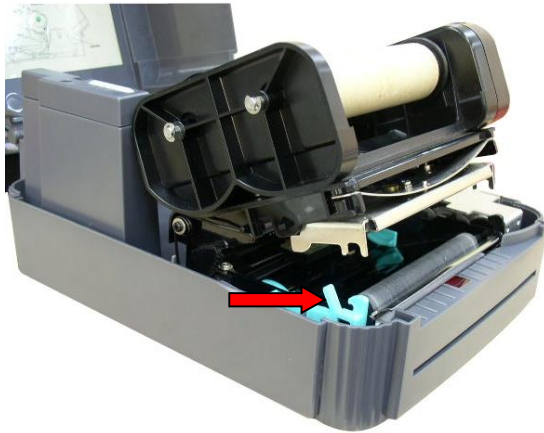
4. Plug the power cord into the power jacket at the rear of the printer, and then plug the power cord into a properly grounded receptacle.

**Note:**

Please switch OFF printer power switch prior to plug in the power cord to printer power jack.

---

## 3.2 Loading the Media



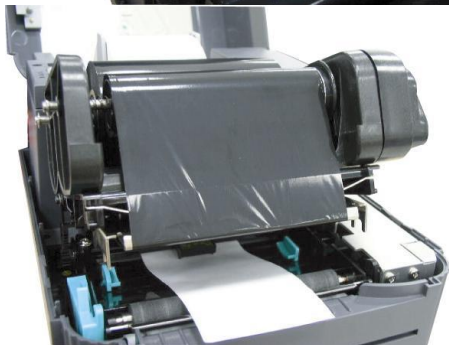
1. Open the printer cover.
2. Disengage the printer carriage by pulling the printer carriage release lever on the left side of the platen.



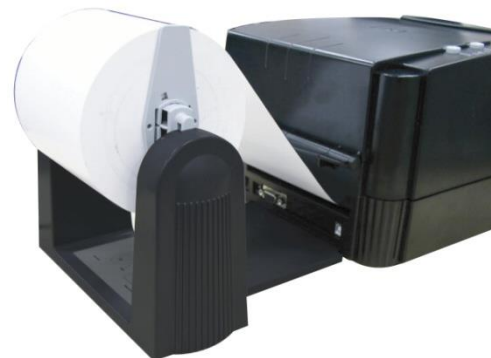
3. Slide the label supply roll spindle through the core of a label roll and attach the fixing tabs onto the spindle.

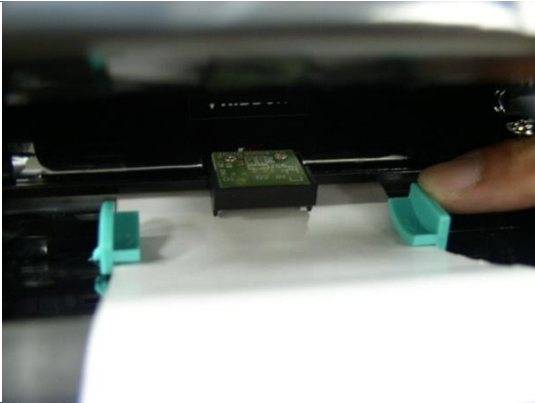


4. Place the label roll into the label roll mount/ or external label roll mount. Feed the label under the carriage and over the platen.



### External Label Roll Mount (Option)





5. Adjust the label guide to fit the width of the media.



6. Engage the printer carriage.

7. Wind the label roll until it becomes adequately taut.
8. Close the printer cover and press the **FEED** button three or four times until the green **ON-LINE** indicator illuminates.
9. When the printer is out of ribbon or media, the **ON-LINE** LED will not illuminate and the **ERR.** LED will flash. Reload the ribbon or media without turning off the printer power. Press the **FEED** button three or four times until the **ON-LINE** LED illuminates. The printing job will be resumed without data loss.

**Note:**

Please refer to videos on [TSC YouTube](#) or software/driver CD disk.

### 3.3 Loading the Ribbon

	<ol style="list-style-type: none"><li>1. Place an empty paper core on the ribbon rewind spindle.</li></ol>
	<ol style="list-style-type: none"><li>2. Insert the left side first. Mount the ribbon rewind paper core on the front hubs.</li><li>3. Please be noted that the bigger hub side with 4 ribs must be installed toward the right side of ribbon mechanism.</li></ol> <div data-bbox="863 981 1444 1216"><p>Please insert the left side first.</p></div>
	<ol style="list-style-type: none"><li>4. Install a ribbon on the ribbon supply spindle. Mount the ribbon supply spindle on the rear hubs.</li></ol>





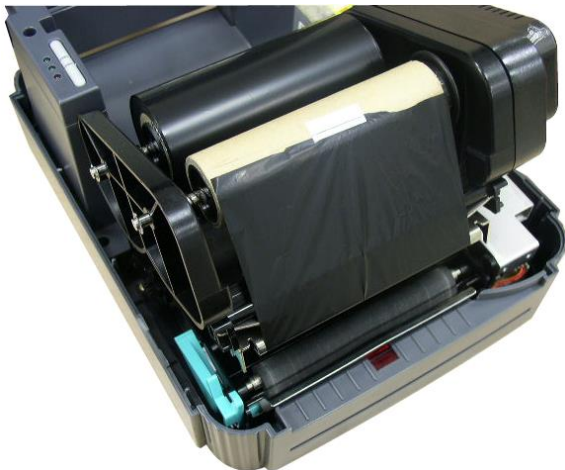
5. Please be noted that the bigger hub side with 4 ribs must be installed toward the right side of ribbon mechanism.



6. Disengage the printer carriage by pulling the carriage release lever upwards.



7. Following the direction of the ↓ **RIBBON** label, pull the transparent ribbon leader to the front from under the ribbon mechanism.



8. Attach the ribbon leader to the empty paper core on the ribbon rewind spindle (with a tape).



9. Rotate the ribbon rewind spindle until the ribbon overlaps the ribbon leader and stretches tight.
10. Engage the printer carriage.
11. Close the printer cover and press the **FEED** button until the green **ON-LINE** LED illuminates.

---

**Note:**

1. Please install ribbon and media and close print head mechanism prior to turn on power. Printer will determine direct thermal or thermal transfer mode automatically while turning on printer power.
  2. Please refer to videos on [TSC YouTube](#) or software/driver CD disk.
-

### 3.4 Install SD Memory Card (Option)



1. Open the memory card cover.



2. Plus the SD memory card module on the main board.



3. Install the SD memory card.  
4. Close the memory card cover.

**\* Recommended SD card specification.**

SD card spec	SD card capacity	Approved SD card manufacturer
V1.0, V1.1	128 MB	SanDisk, Transcend
V1.0, V1.1	256 MB	SanDisk, Transcend, Panasonic
V1.0, V1.1	512 MB	SanDisk, Transcend, Panasonic
V1.0, V1.1	1 GB	SanDisk, Transcend, Panasonic
V2.0 SDHC CLASS 4	4 GB	
V2.0 SDHC CLASS 6	4 GB	SanDisk, Transcend, Panasonic
V1.0, V1.1	microSD 128 MB	Transcend, Panasonic
V1.0, V1.1	microSD 256 MB	Transcend, Panasonic
V1.0, V1.1	microSD 512 MB	Panasonic
V1.0, V1.1	microSD 1 GB	Transcend, Panasonic
V2.0 SDHC CLASS 4	microSD 4 GB	Panasonic
V2.0 SDHC CLASS 6	microSD 4 GB	Transcend
V1.0, V1.1	miniSD 128 MB	Transcend, Panasonic
V1.0, V1.1	miniSD 256 MB	Transcend, Panasonic
V1.0, V1.1	miniSD 512 MB	Transcend, Panasonic
V1.0, V1.1	miniSD 1 GB	Transcend, Panasonic
V2.0 SDHC CLASS 4	miniSD 4 GB	Transcend
V2.0 SDHC CLASS 6	miniSD 4 GB	
<ul style="list-style-type: none"> <li>- The DOS FAT file system is supported for the SD card.</li> <li>- Folders/files stored in the SD card should be in the 8.3 filename format</li> <li>- The miniSD/microSD card to SD card slot adapter is required.</li> </ul>		

## 4. Using Printer

---

### 4.1 Power-on Utilities

There are three power-on utilities to set up and test hardware. These utilities are activated by pressing the FEED or PAUSE button and turning on the printer power simultaneously. The utilities are listed as below:

1. Self-test
2. Gap sensor calibration
3. Printer initialization

**Note:**

Please refer to videos on [TSC YouTube](#) or software/driver CD disk.

#### 4.1.1 Self Test and Dump Mode

Install the label first. Press the FEED button and then turn on the printer power. Do not release the FEED button until the printer feeds labels. The printer performs the following items:

1. Calibrate label pitch
2. Print out thermal print head check pattern
3. Print the internal settings
4. Enter dump mode

To initiate the self test mode, the printer will calibrate the label length. If the label gap is not detected within 7", the printer stops feeding labels and the media is treated as continuous paper. In self test, a check pattern is used to check the performance of the thermal print head. Following the check pattern, the printer prints internal settings as listed below.

When the self test is completed, the printer enters the dump mode. Please turn the printer's power off and then on to resume normal printing.

Self-test printout

-----  
SYSTEM INFORMATION  
-----  
MODEL: XXXXXX  
FIRMWARE: X.XX  
CHECKSUM: XXXXXXXX  
S/N: XXXXXXXXXXXX  
TCF: NO  
DATE: 1970/01/01  
TIME: 00:04:18  
NON-RESET: 110 m (TPH)  
RESET: 110 m (TPH)  
NON-RESET: 0 (CUT)  
RESET: 0 (CUT)  
-----

Model name  
F/W version  
Firmware checksum  
Printer S/N  
TSC configuration file  
System date  
System time  
Printed mileage (meter)  
Cutting counter

-----  
PRINTING SETTING  
-----  
SPEED: 5 IPS  
DENSITY: 8.0  
WIDTH: 4.00 INCH  
HEIGHT: 4.00 INCH  
GAP: 0.00 INCH  
INTENSION: 5  
CODEPAGE: 850  
COUNTRY: 001  
-----

Print speed (inch/sec)  
Print darkness  
Label size (inch)  
Gap distance (inch)  
Gap/black mark sensor  
intension  
Code page  
Country code

-----  
Z SETTING  
-----  
DARKNESS: 16.0  
SPEED: 4 IPS  
WIDTH: 4.00 INCH  
TILDE: 7EH (~)  
  
CARET: 5EH (^)  
DELIMITER: 2CH (,)  
POWER UP: NO MOTION  
HEAD CLOSE: NO MOTION  
-----

ZPL setting information  
Print darkness  
Print speed (inch/sec)  
Label size  
Control prefix  
Format prefix  
Delimiter prefix  
Printer power up motion  
Printer head close motion

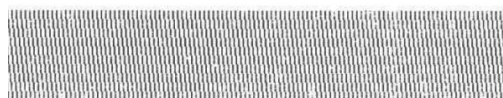
Note: ZPL is emulating for Zebra® language.

-----  
RS232 SETTING  
-----  
BAUD: 9600  
PARITY: NONE  
DATA BIT: 8  
STOP BIT: 1  
-----

RS232 serial port  
configuration

-----  
DRAM FILE (0 FILES)  
-----  
PHYSICAL XXXX KBYTES  
AVAILABLE XXXX KBYTES  
-----  
FLASH FILE (0 FILES)  
-----  
PHYSICAL XXXX KBYTES  
AVAILABLE XXXX KBYTES  
-----

Numbers of download files  
Total & available memory  
space



Print head check pattern

## Dump Mode

After the self test, the printer enters the dump mode. In this mode, any characters sent from the host computer will be printed in two columns, as shown. The characters received will be shown in the first column, and their corresponding hexadecimal values, in the second. This is often helpful to users for the verification of programming commands or debugging of printer programs. Reset the printer by turning the POWER switch off and on.

```

*****
NOW IN DUMP MODE

DOWNLOAD "DE 44 4F 57 4E 4C 4F 41 44 20 22 44 45
MO2.BAS" SI 4D 4F 32 2E 42 41 53 22 0D 0A 53 49
  4.00,5.00 5A 45 20 34 2E 30 30 2C 35 2E 30 30
)LS SPEED 0D 0A 43 4C 53 0D 0A 53 50 45 45 44
, .5 DENSIT 20 31 2E 35 0D 0A 44 45 4E 53 49 54
Y 10 DIRECT 59 20 31 30 0D 0A 44 49 52 45 43 54
ION 0 SET C 49 4F 4E 20 30 0D 0A 53 45 54 20 43
UTTER OFF S 55 54 54 45 52 20 4F 46 46 0D 0A 53
ET DEBUG LAB 45 54 20 44 45 42 55 47 20 4C 41 42
EL REFERENC 45 4C 0D 0A 52 45 46 45 52 45 4E 43
E 0,0 A=100 45 20 30 2C 30 0D 0A 41 3D 31 30 30
0 Y=100 FO 30 0D 0A 59 3D 31 30 30 0D 0A 46 4F
R I=1 TO 3 52 20 49 3D 31 20 54 4F 20 33 0D 0A
BARCODE 100, 42 41 52 43 4F 44 45 20 31 30 30 2C
Y, "39",96,1, 59 2C 22 33 39 22 2C 39 36 2C 31 2C
0,2,4,STR$(A 30 2C 32 2C 34 2C 53 54 52 24 28 41
) A=A+1 Y= 29 0D 0A 41 3D 41 2B 31 0D 0A 59 3D
Y+150 NEXT 59 2B 31 35 30 0D 0A 4E 45 58 54 0D
PRINT 1 EO 0A 50 52 49 4E 54 20 31 0D 0A 45 4F
P DEMO2 50 0D 0A 44 45 4D 4F 32 0D 0A

```

ASCII Data →

Hex decimal data related to left column of ASCII data ←

### 4.1.2 Gap Sensor Calibration Utility

This utility is used to calibrate the sensitivity of gap sensor. Users may have to calibrate the gap sensor for two reasons:

1. The media is being changed to a new type.
2. Initialize the printer.

**Note:**

**The ERR. LED may flash if gap sensor is not calibrated properly.**

Please follow the steps below to calibrate gap sensor:

1. Turn off the printer power and install blank labels (without any logo or character) on printer.

2. Hold down the PAUSE button then turn on printer power.

Release PAUSE button when the printer feeds labels. Do not turn off printer power until the printer stops and two green LEDs light on.

**Note:**

**Black mark sensor has fixed sensitivity. It is no need to calibrate the black mark sensor**

### 4.1.3 Printer Initialization

Printer initialization sets printer parameters to default values. And it will not clear downloaded files resident in flash memory.

Please follow the steps below to initialize the printer:

1. Turn off the printer power.
2. Hold down the PAUSE and FEED buttons and turn on the printer power.
3. Do not release the buttons until the three LEDs flash in turn.

**Note:**

1. **Printing method (thermal transfer or thermal direct printing) will be set automatically at the activation of printer power.**
2. **When printer initialization is done, sensor sensitivity is reset to default. Sensor calibration is required before printing labels.**
3. **Download files will not be deleted after printer initialization. For more information about deleting files, please refer to TSPL2 programming manual KILL command section or using DiagTool.**

Printer configuration will be restored to defaults as below after initialization.

Parameter	Default setting
Speed	76.2 mm/sec (3 ips)
Density	8
Media Width	4" (101.6 mm)
Media Height	4" (101.6 mm)
Sensor Type	Gap sensor
Gap Setting	0.12" (3.0 mm)
Print Direction	0
Reference Point	0,0 (upper left corner)
Offset	0
Post-Print Action	Tear mode





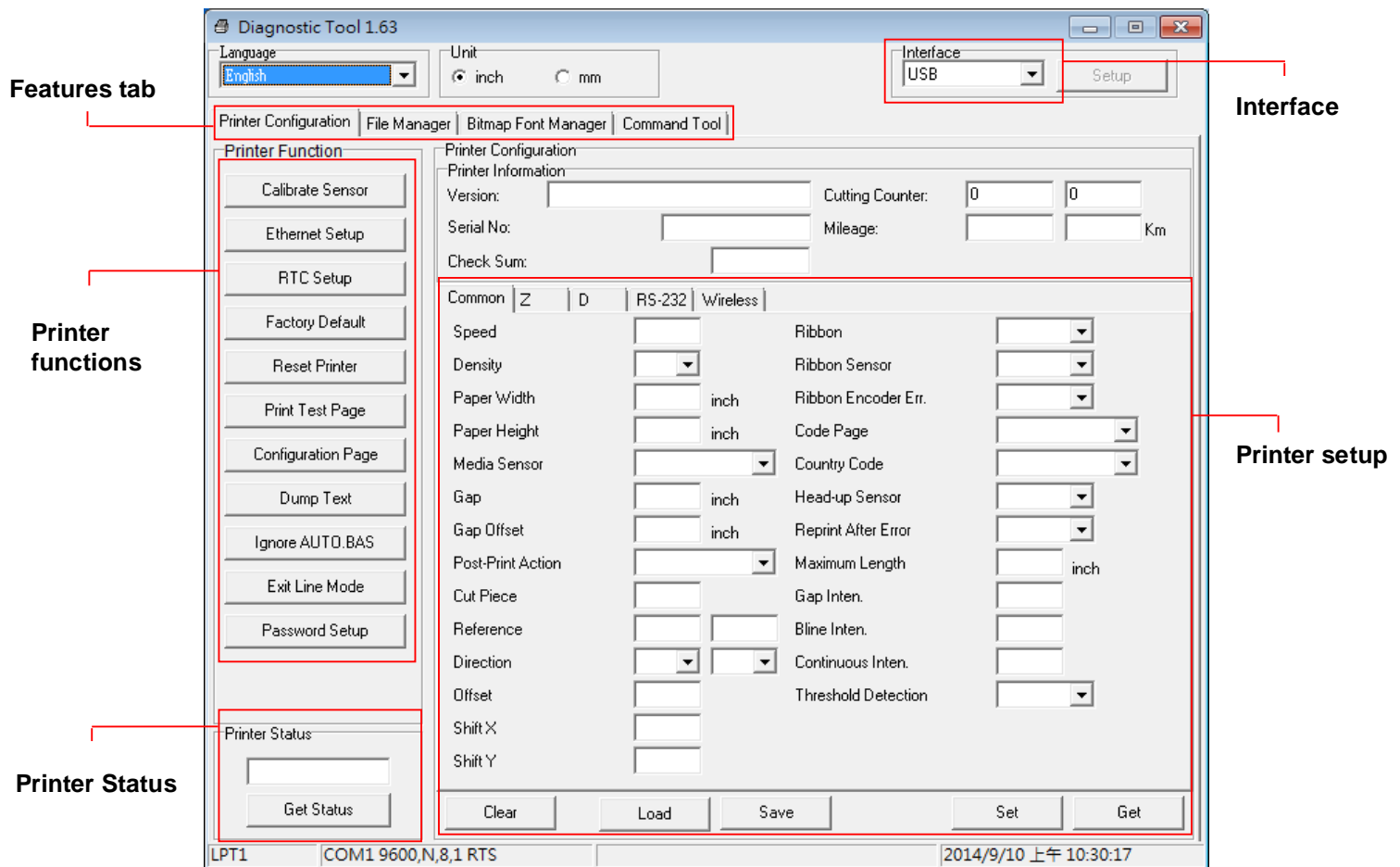
Serial Port Settings	9600 bps, none parity, 8 data bits, 1 stop bit
Code Page	850
Country Code	001
Clear Flash Memory	No

## 5. Diagnostic Tool

TSC's Diagnostic Utility is an integrated tool incorporating features that enable you to explore a printer's settings/status; change a printer's settings; download graphics, fonts and firmware; create a printer bitmap font; and send additional commands to a printer. With the aid of this powerful tool, you can review printer status and setting in an instant, which makes it much easier to troubleshoot problems and other issues.

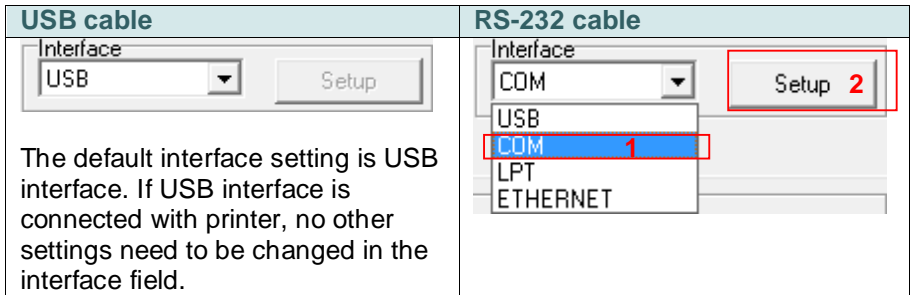
### 5.1 Start the Diagnostic Tool

1. Double click on the Diagnostic tool icon   to start the software.
2. There are four features (Printer Configuration, File Manager, Bitmap Font Manager, Command Tool) included in the Diagnostic utility.



## 5.2 Printer Function

1. Connect the printer and computer with a cable.
2. Select the PC interface connected with bar code printer.



3. Click the “Printer Function” button to setup.
4. The detail functions in the Printer Function Group are listed as below.

Printer Function	Function	Description
Calibrate Sensor	Calibrate Sensor	Calibrate the sensor specified in the Printer Setup group media sensor field
Ethernet Setup	Ethernet Setup	Setup the IP address, subnet mask, gateway for the on board Ethernet
RTC Setup	RTC Setup	Synchronize printer Real Time Clock with PC
Factory Default	Factory Default	Initialize the printer and restore the settings to factory default.
Reset Printer	Reset Printer	Reboot printer
Print Test Page	Print Test Page	Print a test page
Configuration Page	Configuration Page	Print printer configuration
Dump Text	Dump Text	To activate the printer dump mode.
Ignore AUTO.BAS	Ignore AUTO.BAS	Ignore the downloaded AUTO.BAS program
Exit Line Mode	Exit Line Mode	Exit line mode.
Password Setup	Password Setup	Set the password to protect the settings

For more information about Diagnostic Tool, please refer to the diagnostic utility quick start guide in the software/driver CD disk \ Utilities directory.

## 6. Troubleshooting

The following guide lists the most common problems that may be encountered when operating this bar code printer. If the printer still does not function after all suggested solutions have been invoked, please contact the Customer Service Department of your purchased reseller or distributor for assistance.

Problem	Solution
Ribbon does not advance or rewind	<ol style="list-style-type: none"> <li>1. The media and ribbon must be installed then engage the print head mechanism prior to turning on printer power.</li> <li>2. Install the black ribbon spindle at the correct direction.</li> <li>3. Please check the "Media settings method" in the driver if it is set to direct thermal mode.</li> </ol>
Poor print quality	<ol style="list-style-type: none"> <li>1. Clean the thermal print head.</li> <li>2. Adjust the print density setting.</li> <li>3. Ribbon and media are not compatible.</li> <li>4. Media thickness is over spec.</li> <li>5. Check if correct power supply is connected with printer.</li> </ol>
Power indicator on printer does not illuminate	<ol style="list-style-type: none"> <li>1. Check the power cord see whether it is properly connected.</li> <li>2. Check if the LED on the power supply is illuminated. If it is not lit on, then the power supply is damaged.</li> <li>3. Check if correct power supply is connected with printer.</li> </ol>
<b>ON-LINE</b> indicator is off, <b>ERR.</b> indicator is on	<ol style="list-style-type: none"> <li>1. Out of paper or out of ribbon  <b>If there is one beep sound when printer is error, then it's gap sensor problem. Please check the following items.</b> <ul style="list-style-type: none"> <li>• Calibrate gap sensor or setup the paper length in labeling software/program properly.</li> <li>• Install the paper at the correct</li> </ul> <b>If there are two beeps sound when printer is error then it's ribbon sensor problem. Please check the following items.</b> <ul style="list-style-type: none"> <li>• Is outside wound ribbon is used with this printer?</li> <li>• Is ribbon threaded correctly in the mechanism?</li> <li>• Is paper core installed on the ribbon take up spindle?</li> </ul> </li> <li>2. Calibrate the sensitivity of gap sensor.</li> </ol>
Continuous feeding when printing labels	<ol style="list-style-type: none"> <li>1. Check the driver or command script setting if sensor type is set properly.</li> <li>2. Calibrate the gap sensor again if die cut media is used for printing.</li> </ol>

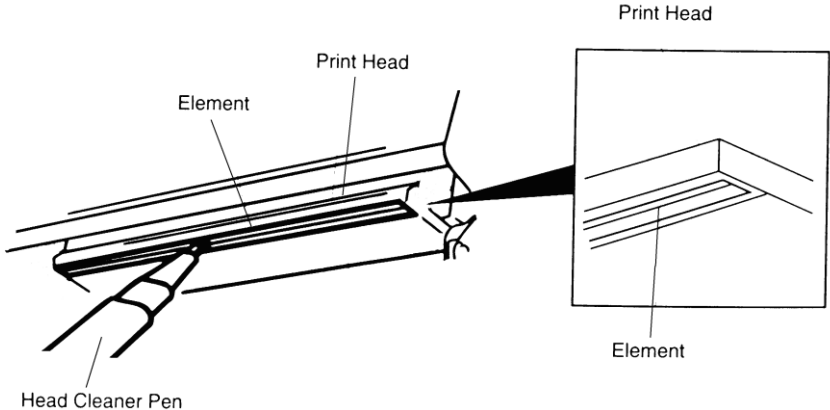
## 7. Maintenance

This session presents the clean tools and methods to maintain your printer.

1. Please use one of following material to clean the printer.

- Cotton swab
- Lint-free cloth
- Vacuum / Blower brush
- 100% Ethanol or Isopropyl Alcohol

2. The cleaning process is described as following,

Printer Part	Method	Interval
<b>Print Head</b>	<ol style="list-style-type: none"> <li>1. Always turn off the printer before cleaning the print head.</li> <li>2. Allow the print head to cool for a minimum of one minute.</li> <li>3. Use a cotton swab and 100% Ethanol or Isopropyl Alcohol to clean the print head surface.</li> </ol>	<p>Clean the print head when changing a new label roll.</p> 
<b>Platen Roller</b>	<ol style="list-style-type: none"> <li>1. Turn the power off.</li> <li>2. Rotate the platen roller and wipe it thoroughly with water.</li> </ol>	Clean the platen roller when changing a new label roll
<b>Sensor</b>	Compressed air or vacuum	Monthly
<b>Exterior</b>	Wipe it with water-dampened cloth	As needed
<b>Interior</b>	Brush or vacuum	As needed

### Note:

- Do not touch printer head by hand. If you touch it careless, please use ethanol to clean it.
- Please use 100% Ethenol or Isopropyl Alcohol. DO NOT use medical alcohol, which may damage the printer head.
- Regularly clean the print head and supply sensors once change a new media to keep printer performance and extend printer life.

# Revise History

---

Date	Content	Editor
2015/3/12	Modify section 1 & 2	Camille
2015/7/8	Modify section 1.6 (media thickness)	Camille
2017/6/8	Modify agency Compliance and Approvals	Kate
2019/10/4	Modify CCC certification logo	Kate



TSC Auto ID Technology Co., Ltd.

Corporate Headquarters

9F., No.95, Minquan Rd., Xindian Dist.,  
New Taipei City 23141, Taiwan (R.O.C.)

TEL: +886-2-2218-6789

FAX: +886-2-2218-5678

Web site: [www.tscprinters.com](http://www.tscprinters.com)

E-mail: [printer\\_sales@tscprinters.com](mailto:printer_sales@tscprinters.com)

[tech\\_support@tscprinters.com](mailto:tech_support@tscprinters.com)

Li Ze Plant

No.35, Sec. 2, Ligong 1st Rd., Wujie Township,  
Yilan County 26841, Taiwan (R.O.C.)

TEL: +886-3-990-6677

FAX: +886-3-990-5577